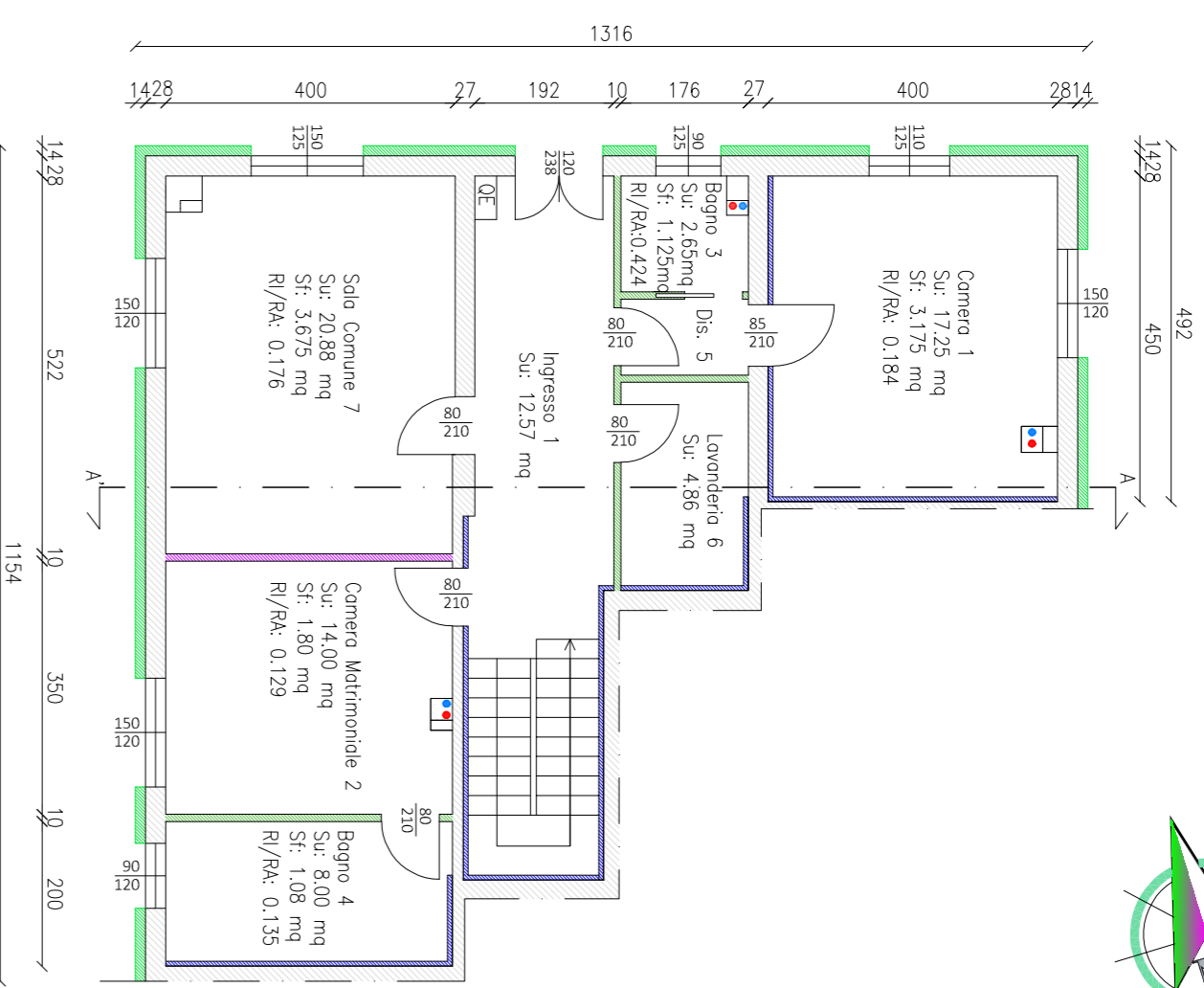
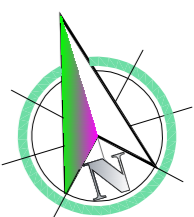
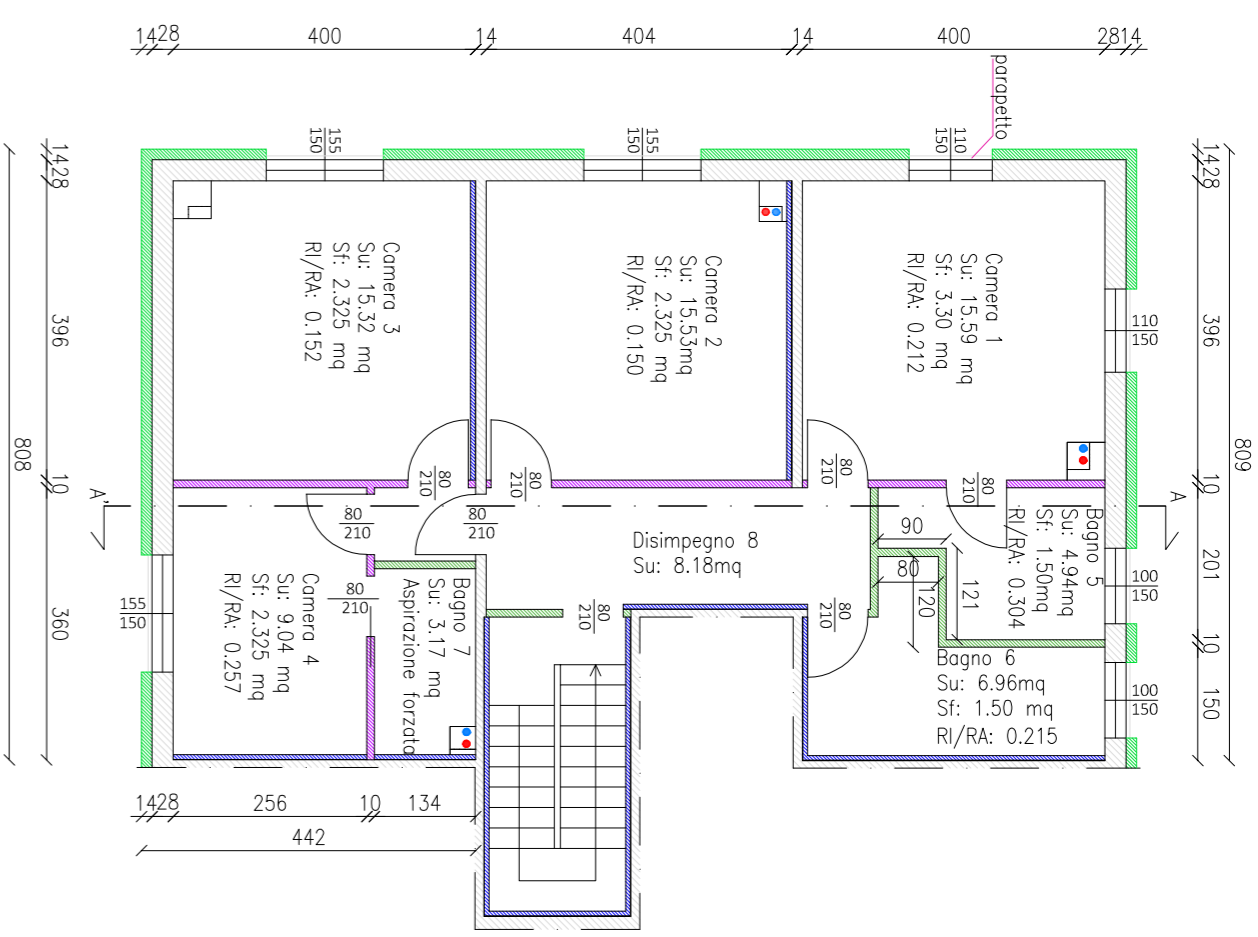


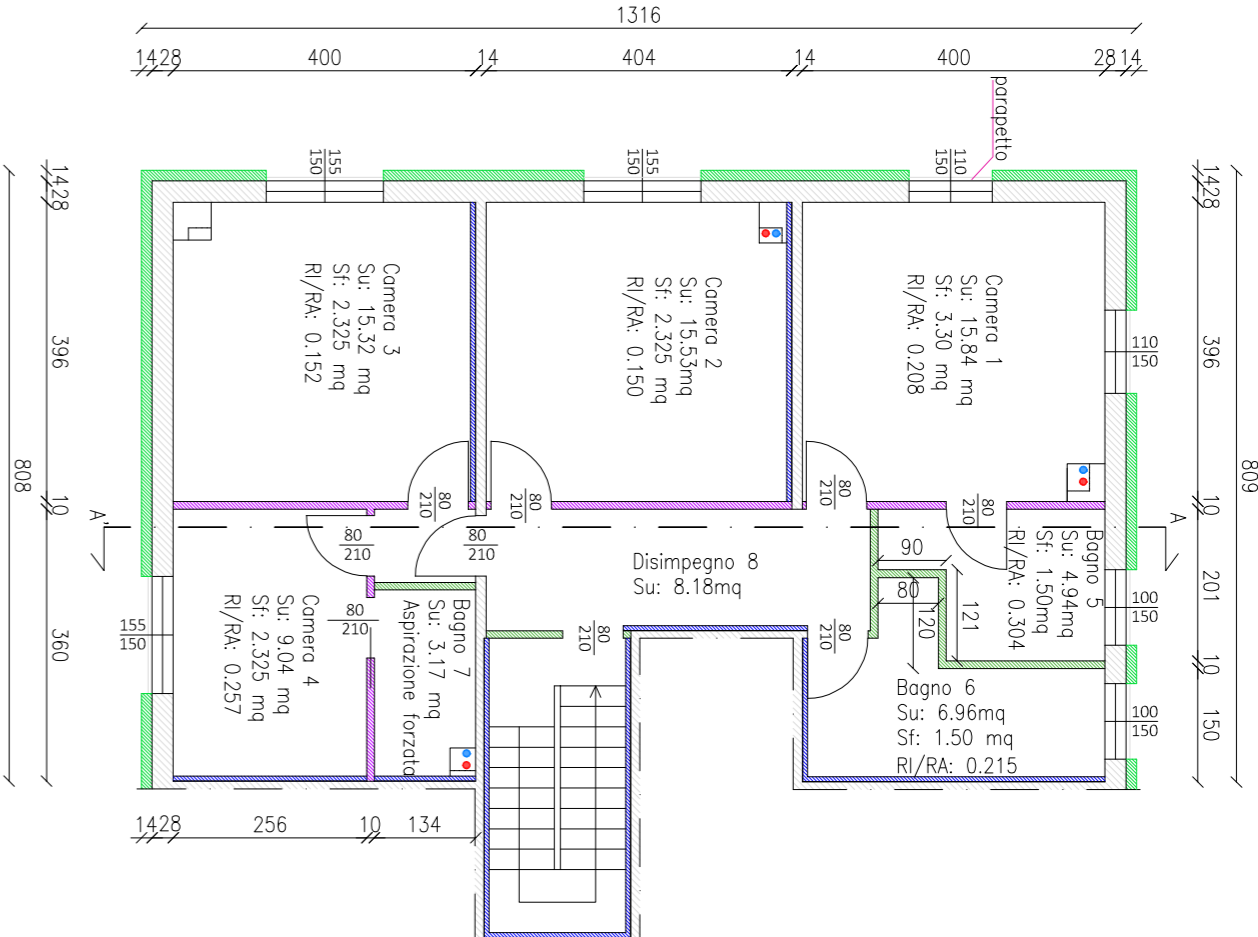
Progetto – Fronta Piano Terra  
 scala 1:100  
 h: 3,00 m



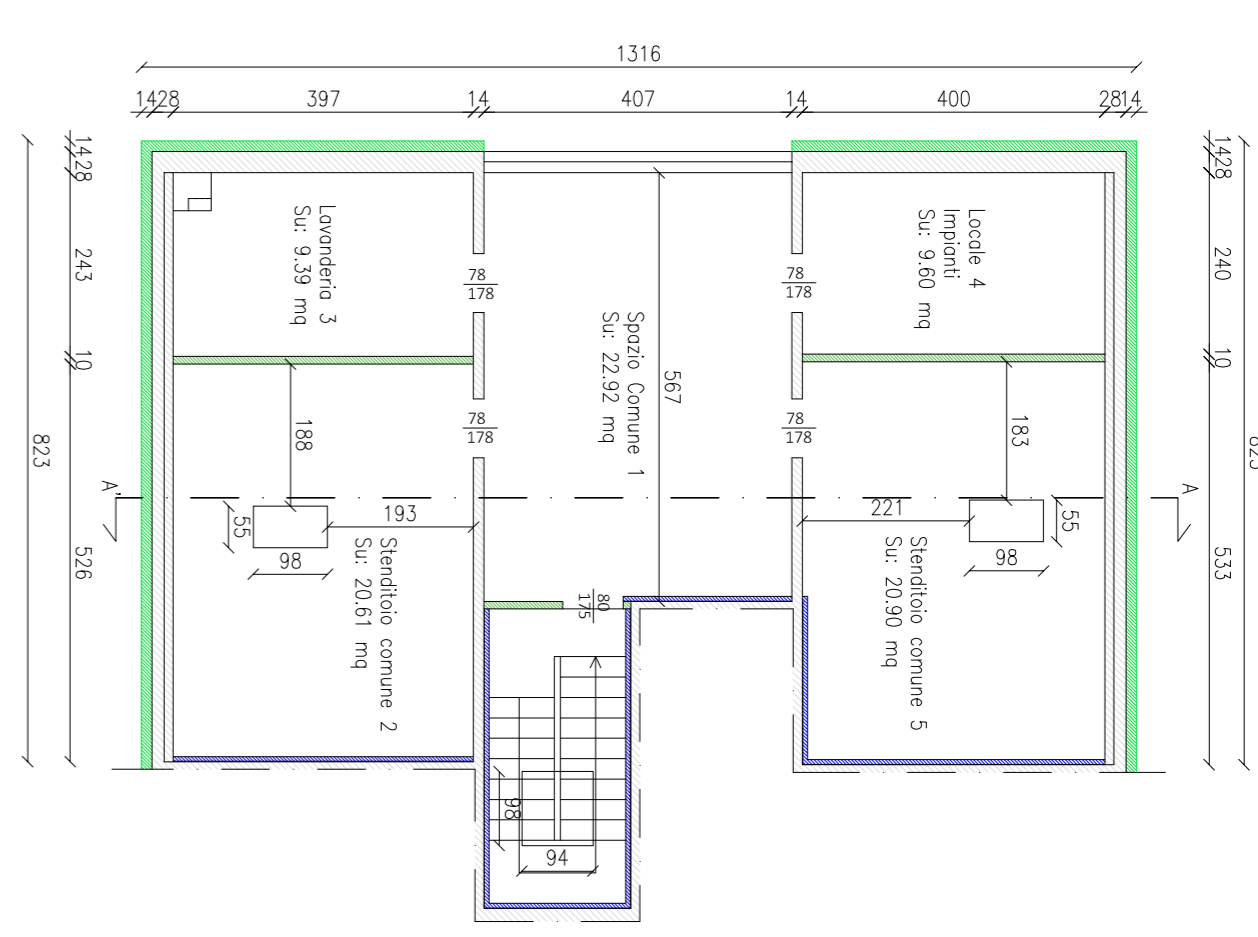
Progetto – Fronta Piano Primo  
 scala 1:100  
 h: 2,70 m



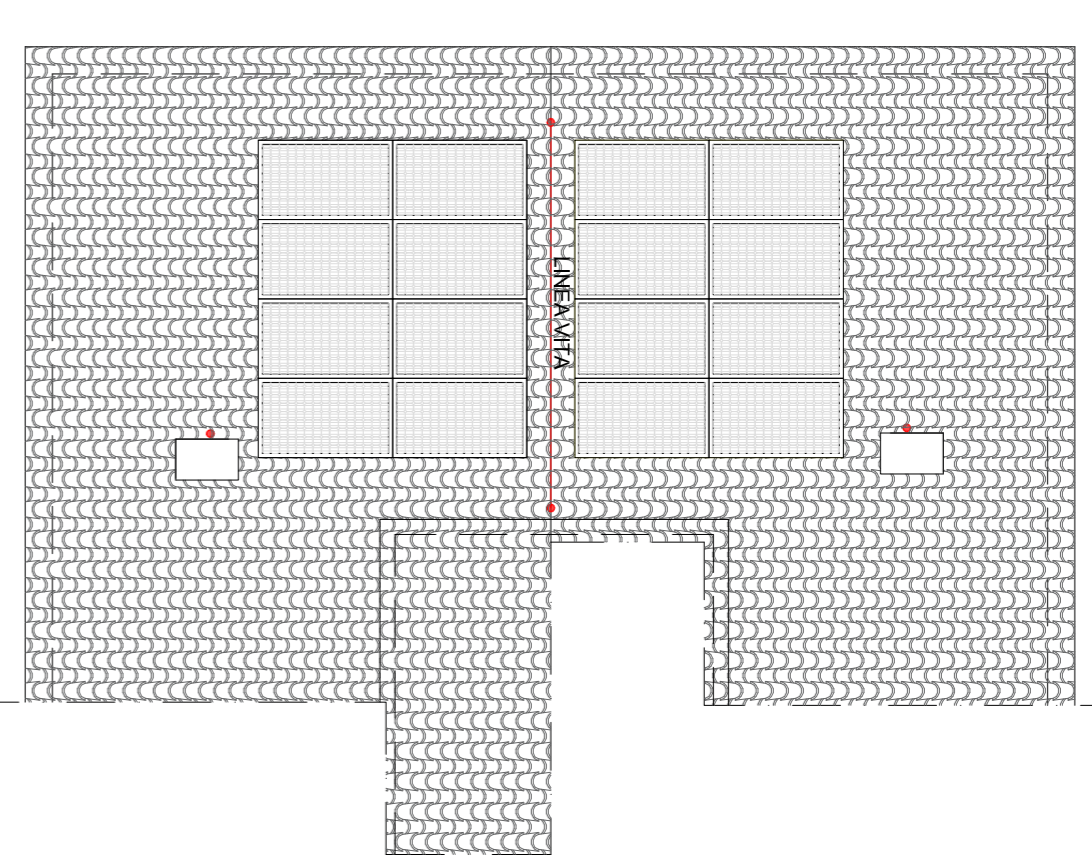
Progetto – Fronta Piano Secondo  
 scala 1:100  
 h: 2,70 m



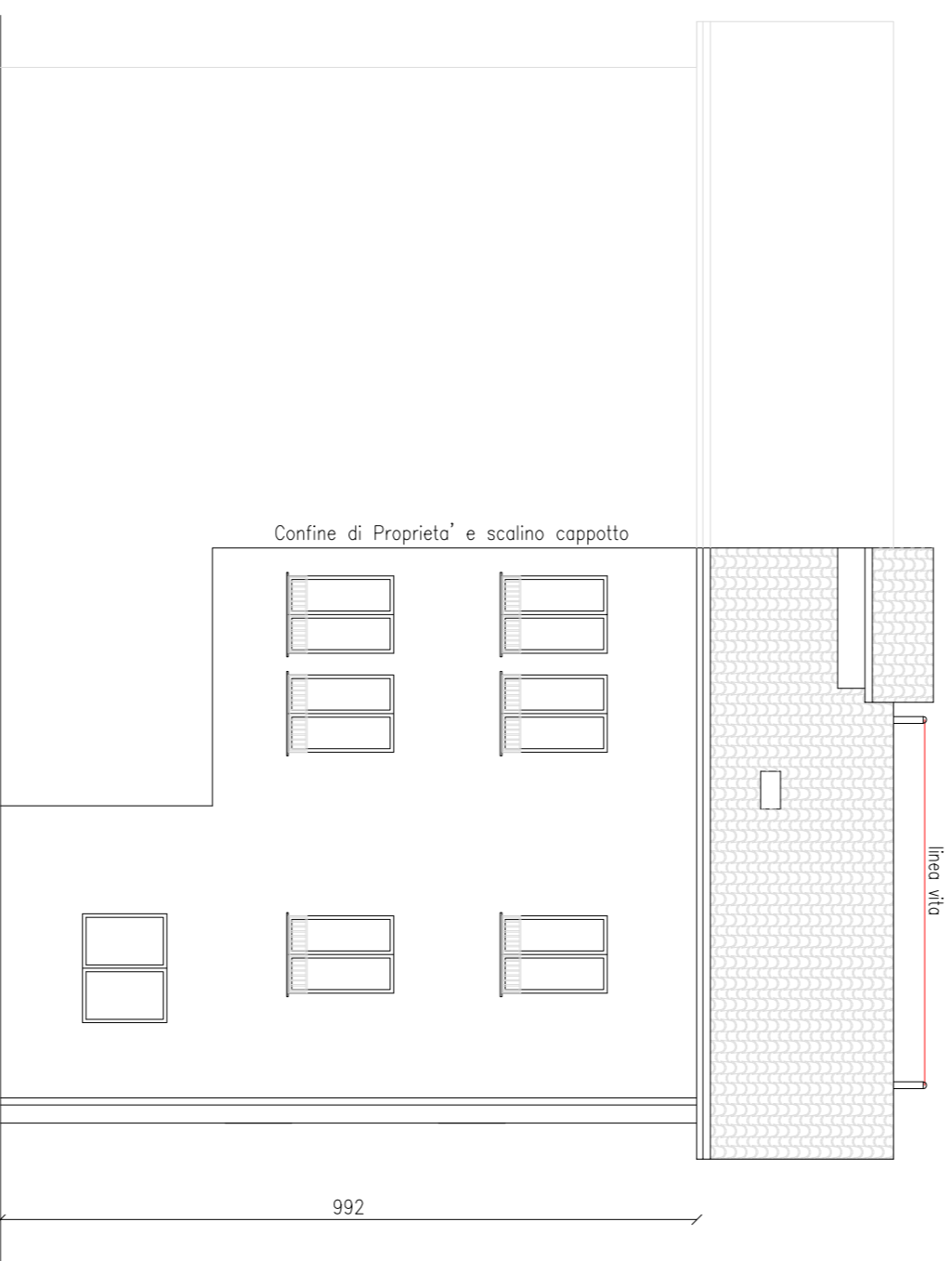
Progetto – Fronta Piano Sottotetto  
 scala 1:100



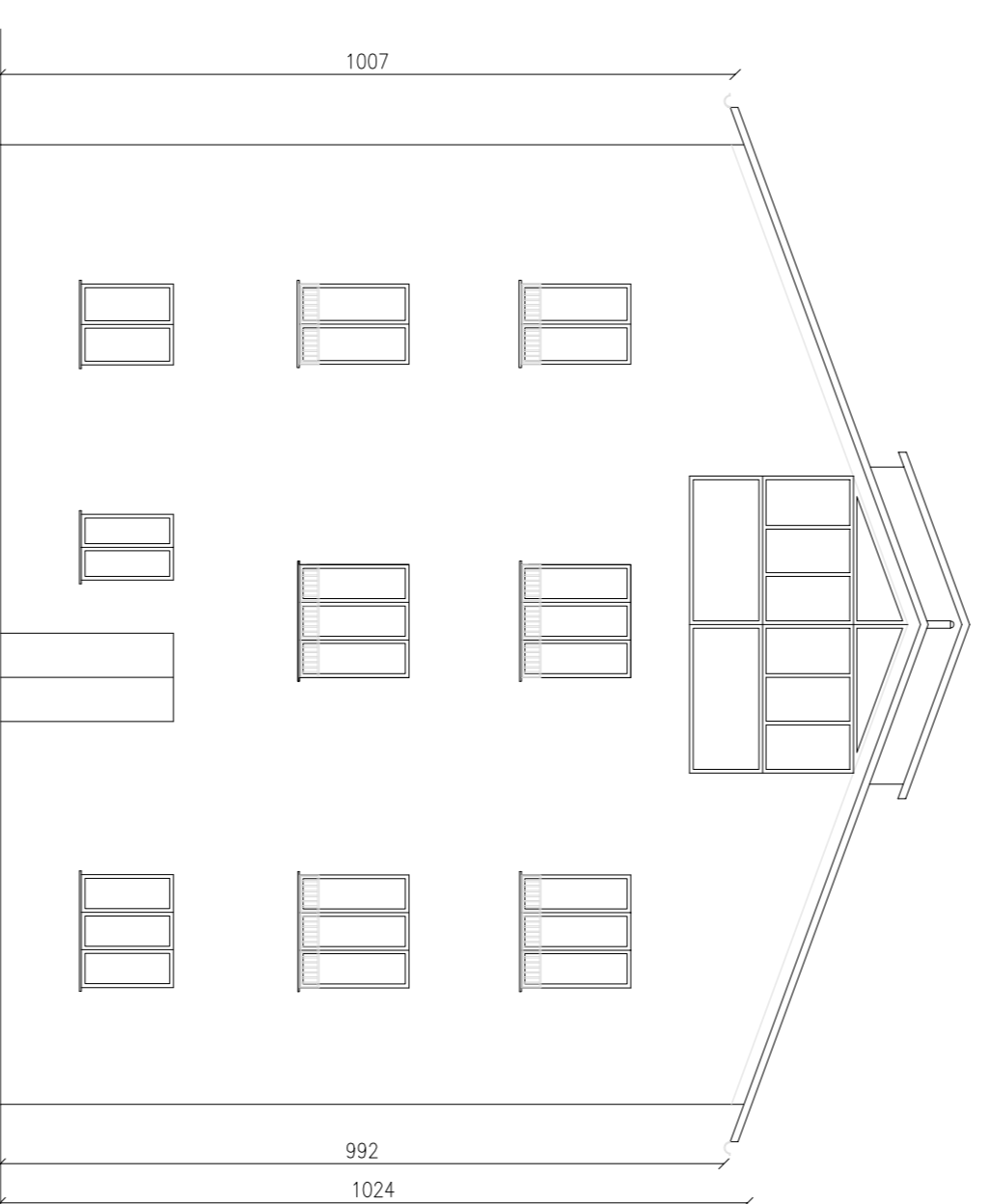
Progetto – Fronta Copertura  
 scala 1:100



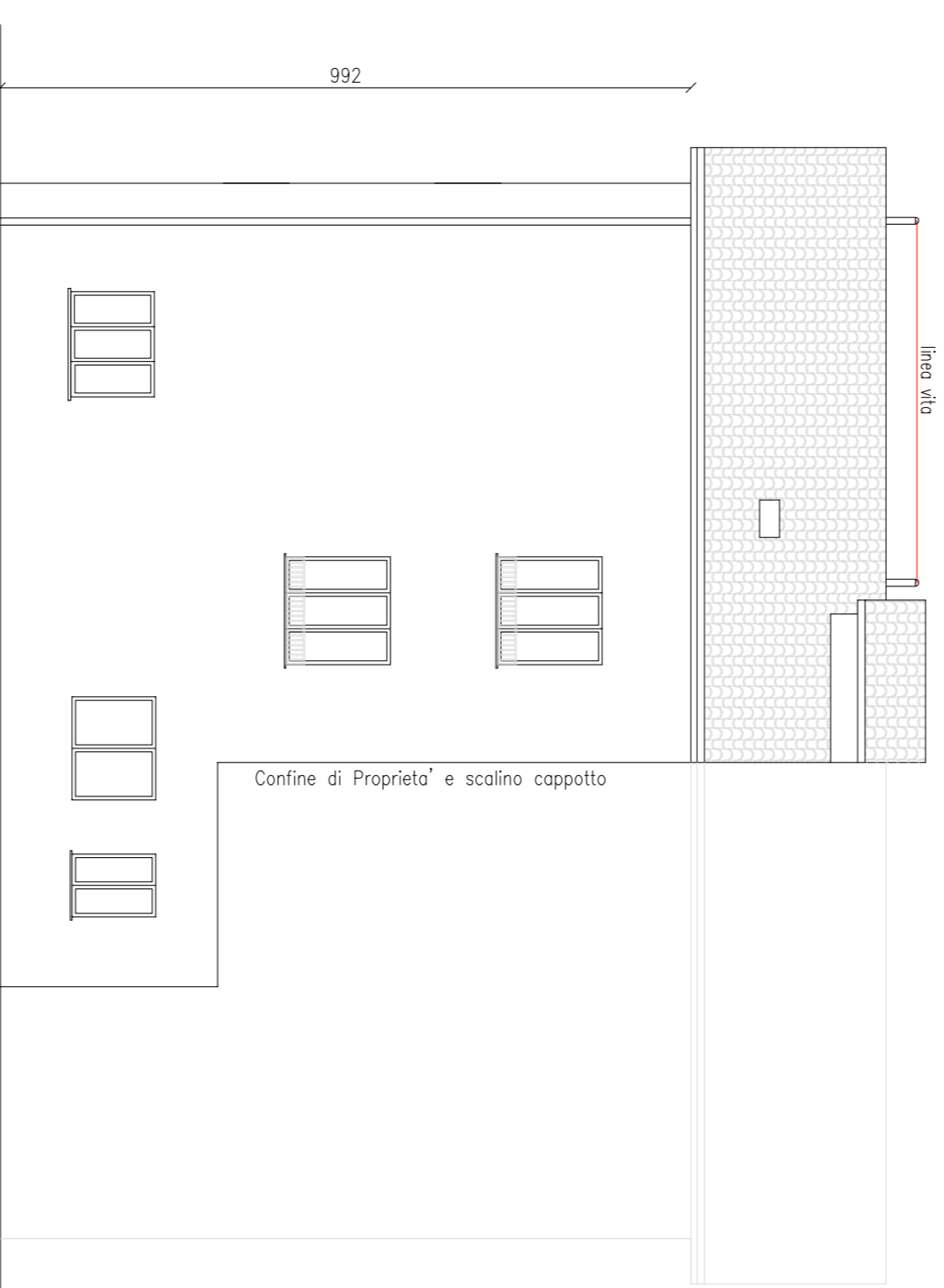
Progetto – Prospetto est  
 scala 1:100



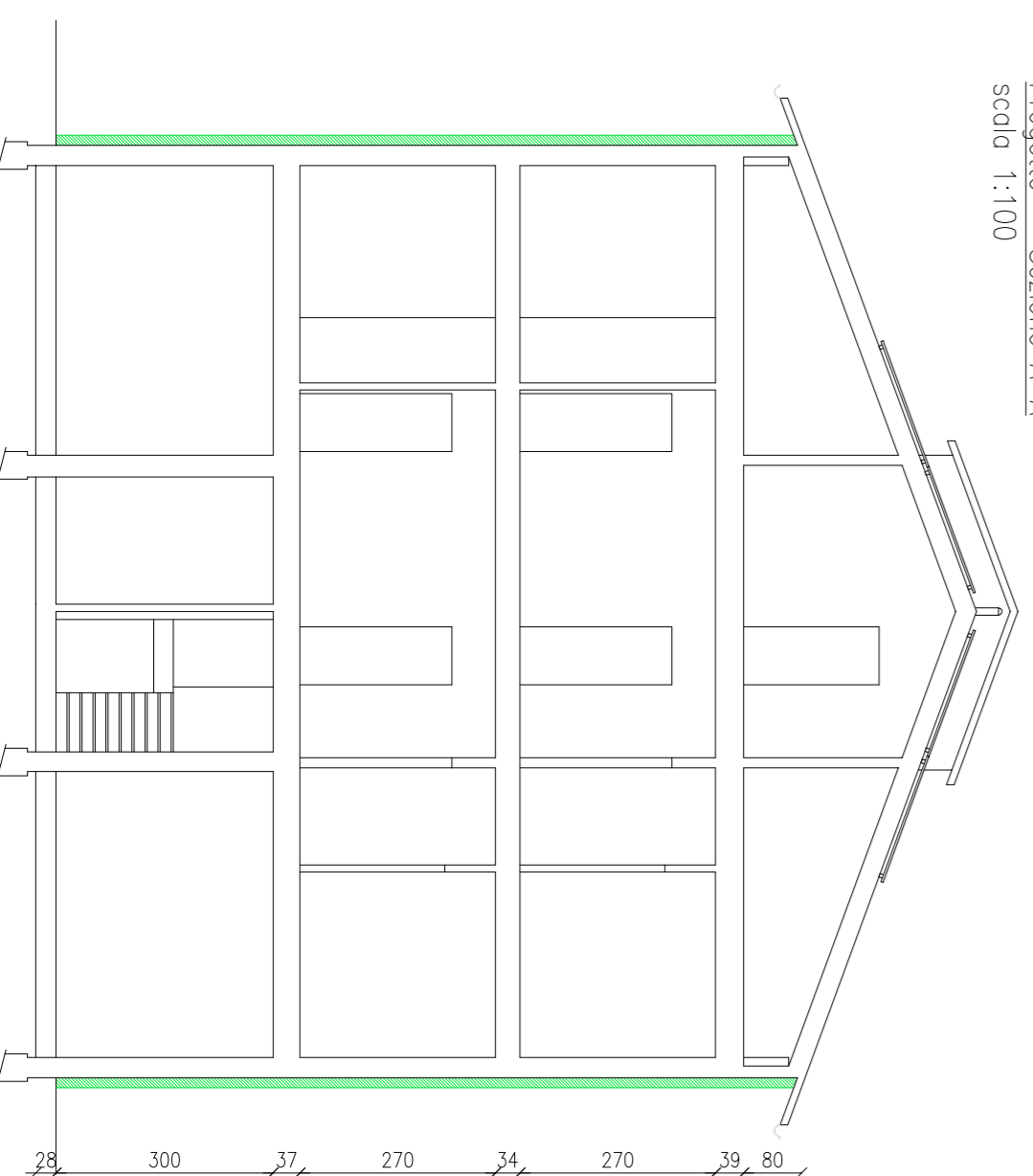
Progetto – Prospetto nord  
 scala 1:100



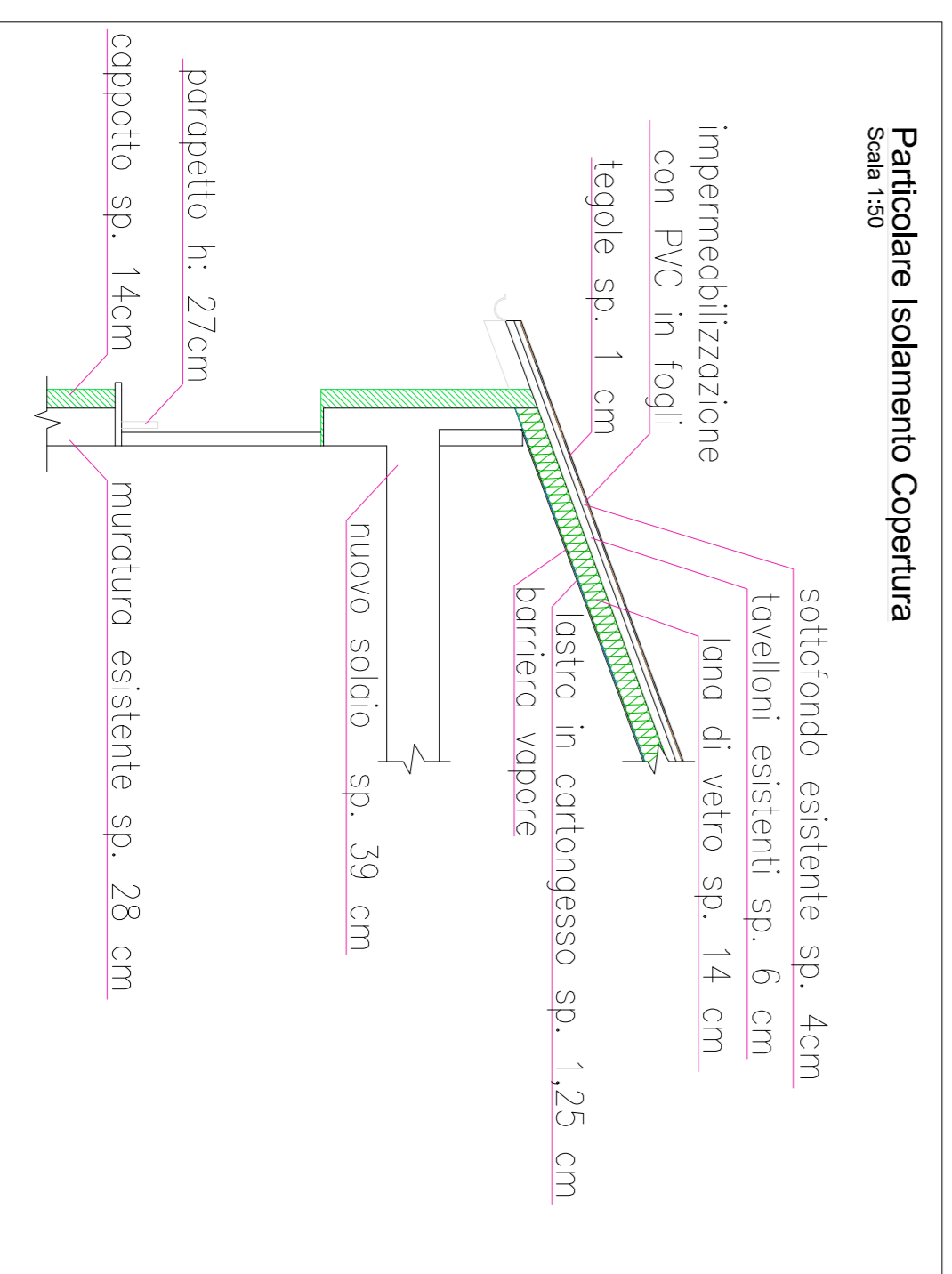
Progetto – Prospetto ovest  
 scala 1:100



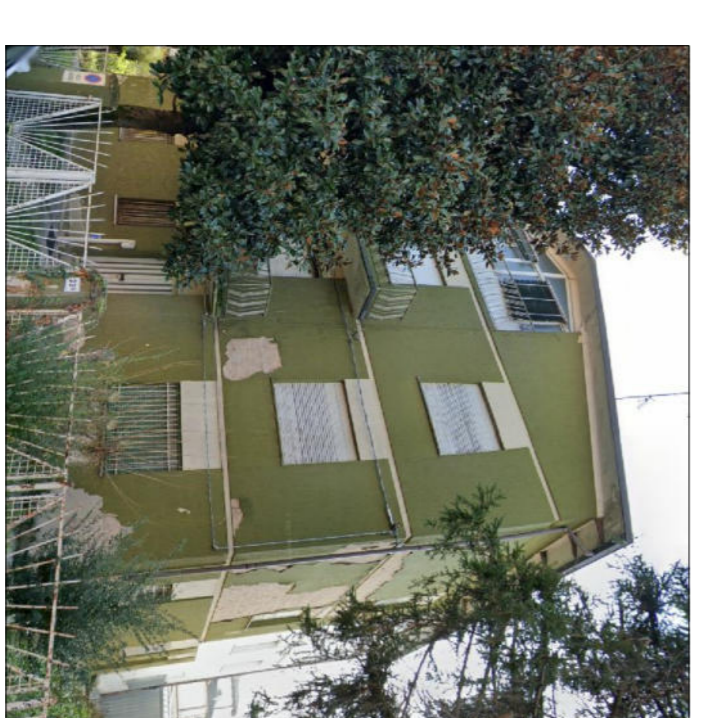
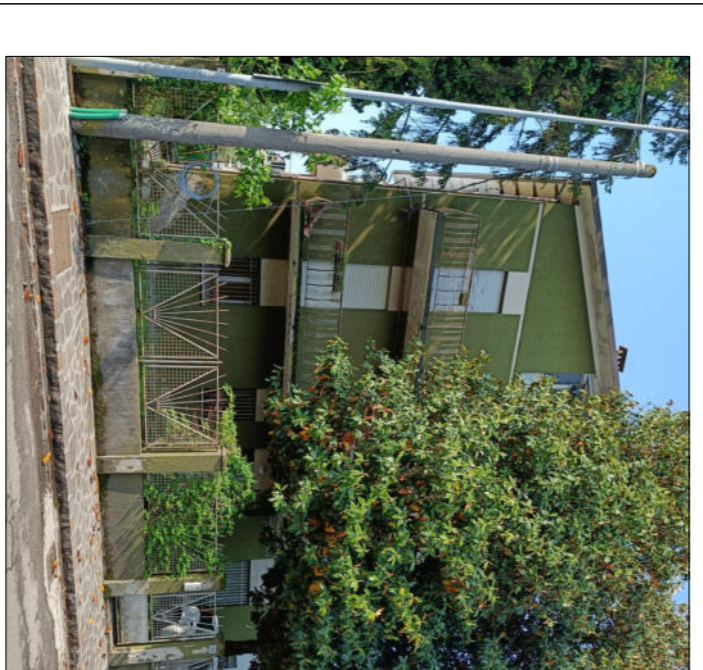
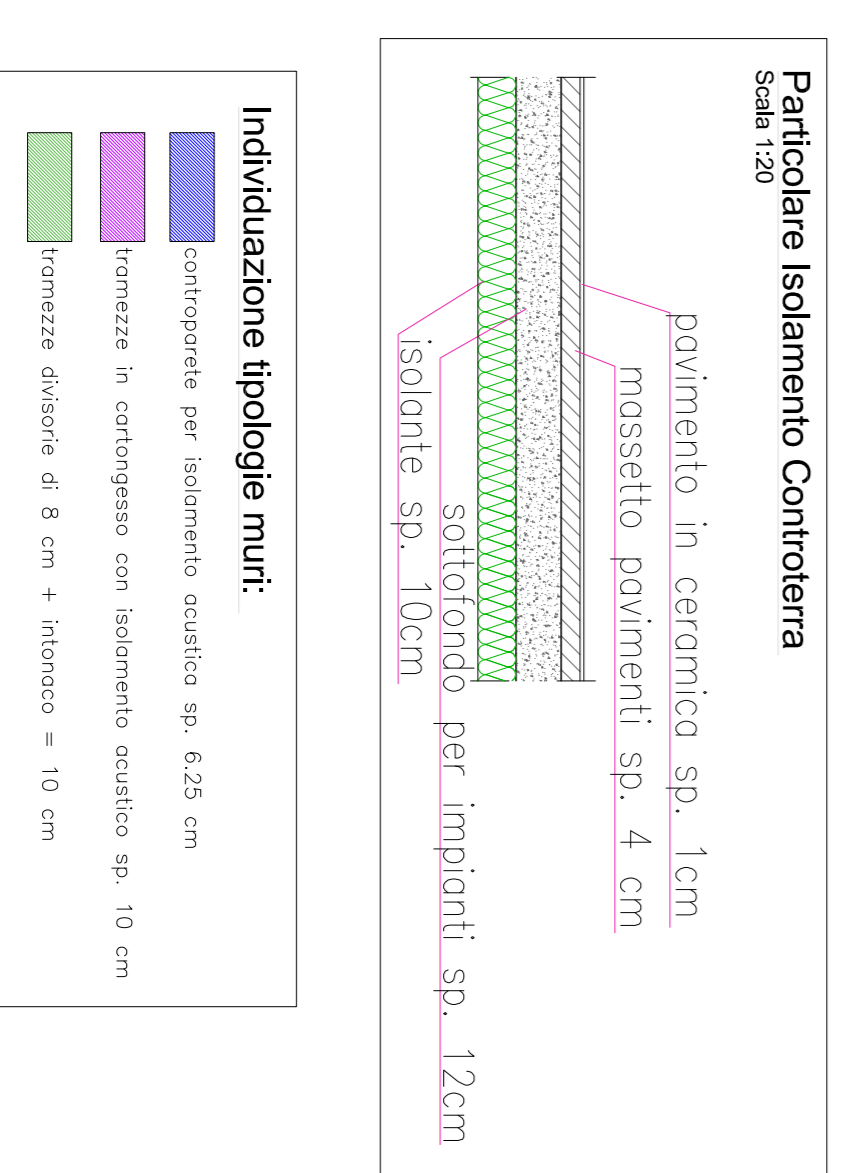
Progetto – Sezione A-A  
 scala 1:100



Particolare Isolamento Copertura  
 Scala 1:50



Particolare Isolamento Controterra  
 Scala 1:20



**MIGLIORAMENTO ENERGETICO  
 RISTRUTTURAZIONE DI PORZIONE DI FABBRICATO  
 DI VIA MOLINARI A CARPI**  
 Progetto di fattibilità tecnico - economica

**PIANO NAZIONALE DI RIPRESA E RESILIENZA (PNRR)**  
 Missione M5C2 - Componente C2 - Investimento 1.3  
 Housing temporaneo e Stazioni di Posta



Responsabile del procedimento  
 ARCH. CECILIA SCACCHETTI

Progettisti  
 GEOM. SPAGGIARI SIMONE



OGGETTO:  
 PROGETTO

N. Tavola:

**2**

DATA: 01 Dicembre 2022

SCALE: varie